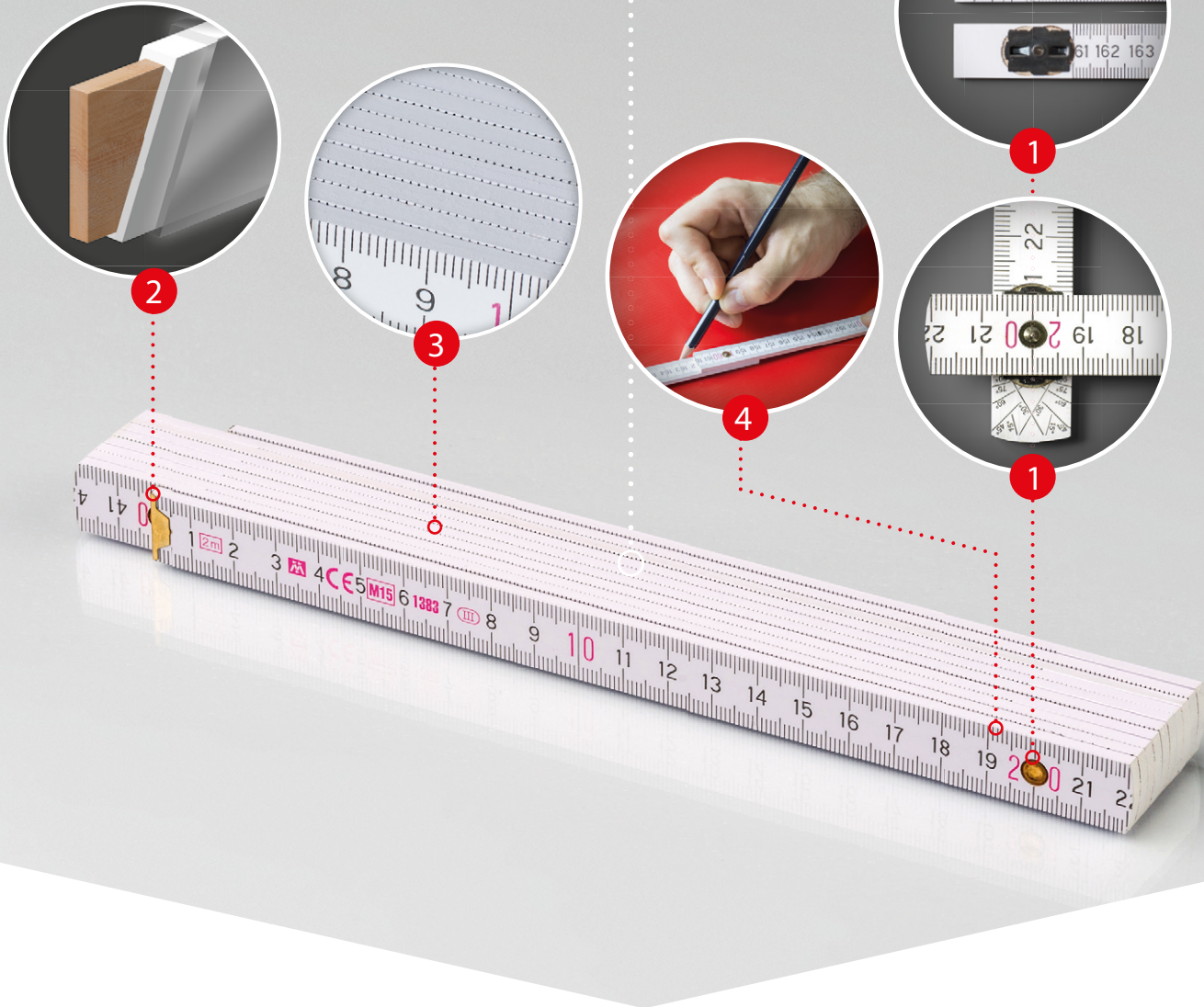


## MTX-B52



## Large, compact space of the ruler is ideal for promotional print

### Wooden folding ruler, type Block 52

- 10 wooden parts – 2 m, with dimensions of 3.2 mm x 16 mm
- material: beechwood / hornbeam
- hidden steel joints, visible rivet

**1 Type of joint** – hidden joints are made of hardened steel. The steel rivet is visible. The joints are greased with mineral Vaseline for comfortable use of the ruler.

**2 Surface treatment of wooden parts** – double-layered water-soluble paint. UV environmentally friendly coating of the top layer protects the ruler from the effect of thinner.

**3 Compact space of the ruler** – the whole surface of the ruler, consisting of 10 parts, can be used for promotional purposes. The adjacent wooden parts form a compact surface for the smooth print. UV coating enables the wrong print to be washed away easily and replaced with different one.

**4 Straight wooden parts** – the smooth wooden parts without grinding enable straight lines to be drawn easily.